



The Electricians' Choice



WEATHERPROOF EV CONSUMER UNITS

A range of consumer units designed for residential, industrial, and commercial applications where EV chargers need to be added to an existing installation.

- > Populated with a 100A 2P main switch, a Type 2 surge protection device, and a B40A 1P 6kA MCB, plus a bidirectional Type A 30mA RCD.
- > IP65-rated metal and polycarbonate enclosure options available.

▲ IP65 Metal EV Consumer Unit



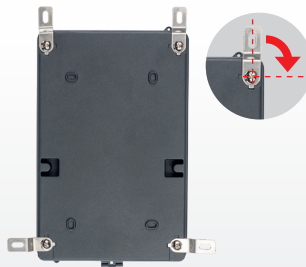
Metal Consumer Unit for external or internal use for industrial, residential or commercial installations. Pre-Configured for protection of 7.4kW single phase AC EV Charger.

- Die-cast aluminium alloy construction.
- Modern neutral colour (RAL7016 Anthracite).
- Smooth walls allow cable entry from all faces.
- Meets the requirements of BS7671 section 722.

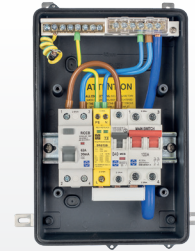
Part Number	Modular Ways	Dimensions HxWxD (mm)
PRO65-REV40AS	6	264 x 167.5 x 105



- Drop down access cover which can remain in the open position.



- Wall mount installation can be achieved by drilling through the rear of the enclosure, or by using the external wall mount brackets provided. External brackets can be positioned in two orientations.



- Populated with Main Switch 100A 2P, Type 2 Surge Protection Device, and B40A 1P 6kA MCB + Bidirectional type A 30mA RCD.
- Generous wiring space for conductors up to 16 mm².

▲ IP65 Polycarbonate EV Consumer Unit



Polycarbonate Consumer Unit for external or internal use for industrial, residential or commercial installations. Pre-Configured for protection of 7.4kW single phase AC EV Charger.

- UV resistant polycarbonate construction.
- Transparent doors allow visual indication of circuit breaker status without opening the door.
- Meets the requirements of BS7671 section 722.

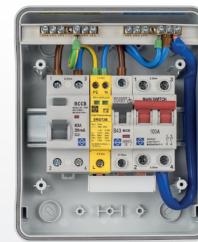
Part Number	Modular Ways	Dimensions HxWxD (mm)
IP65-REV40AS	6	200 x 164 x 100



- Reserve a position for functional stickers on the face frame and clearly view the control area of the components.



- Smooth walls allow cable entry from all faces.



- Populated with Main Switch 100A 2P, Type 2 Surge Protection Device, and B40A 1P 6kA MCB + Bidirectional type A 30mA RCD.
- Wiring space suitable for conductors up to 6 mm².



The Electricians' Choice



WEATHERPROOF ENCLOSURES

- > Designed for ease of component alignment and simplify internal setup and adjustments for the user.
- > Available in robust IP65-rated metal or polycarbonate, as well as in IP55-rated ABS enclosure for environments with occasional dust and moisture exposure.



▲ IP65 Metal Enclosure

- Aluminum alloy construction.
- Modern neutral colour (RAL7016 Anthracite).
- 6 modular ways (unpopulated).
- Pad-lockable door.
- Smooth walls allow cable entry from all faces.
- Main Cable entry possible to all faces and rear.
- Single pole comb busbar.

Part Number	Modular Ways	Dimensions HxWxD (mm)
PRO65-CU06	6	264 x 167.5 x 105



▲ IP65 Polycarbonate Enclosure

- UV resistant polycarbonate construction.
- Available in 7 different sizes.
- Equipped with circuit baffle.
- Pad-lockable and transparent door.
- Main Cable entry possible to all faces and rear.
- Single pole comb busbar.

Part Number	Modular Ways	Dimensions HxWxD (mm)
4/65ENC	4	200 x 128 x 100
6/65ENC	6	200 x 164 x 100
9/65ENC	9	200 x 218 x 100
13/65ENC	13	230 x 296 x 120
15/65ENC	15	230 x 332 x 120
18/65ENC	18	230 x 380 x 120
26/65ENC	26	390 x 296 x 130



▲ IP55 Insulated Weatherproof Enclosure

- Available in 2 sizes: 4 way & 8 way.
- Extended height suitable for tall RCBOs.
- Neutral and Earth bars.
- Neutral flex for connection of the incoming device to the neutral bar.
- Single pole comb busbar.

Part Number	Modular Ways	Dimensions HxWxD (mm)
4/55ENC	4	226 x 118 x 102
8/55ENC	8	226 x 193 x 102

Scan the QR code to explore the Enclosure Range



The Electricians' Choice

LEWDEN LTD
 Unit 4, Bradbury Drive,
 Springwood Industrial Estate,
 Braintree
 Essex
 CM7 2SD

Tel.: +44 (0) 1376 336 200
 sales@lewden.co.uk

www.lewden.com



For instant access to technical support through our team of expert engineers.

AMA57666