



*The Electricians' Choice*

**NEW**



## 2025 NEW ADDITIONS

Introducing new Pro Consumer Units, new TPN Boards with Type 2 SPD, improved terminal blocks, and advanced sub-distribution solutions - designed for efficiency, safety, and seamless installation.

### **New PRO Range Consumer Units Pre-fitted Type 2 SPD**

Connects directly to the comb busbar, eliminating the need for a dedicated MCB, giving you one additional useable way.

### **Free Accessories Package Included**

- Mains tail clamp
- DIN rail modular blank
- Rear entry cable grommet



The Electricians' Choice

## New consumer units range

**NEW**

### Enhanced Surge Protection

Models featuring pre-installed surge protection now include our brand-new SRGT2B surge device. This innovative surge device connects directly to the comb busbar and eliminates the need for a dedicated MCB, giving you one additional useable way.

### Simplified Part Numbers

Now, part numbers will identify:

- Total number of useable ways
- Round or square knockouts
- Consumer unit arrangement
- Finish colour

### FREE Accessories Package

Every unit now includes additional accessories at no extra cost:

- Mains tails clamp
- Rear entry cable grommet
- DIN rail modular blank

## ▲ RCBO Consumer Units with Type 2 Surge Protection (White)

- Configured with 100A DP Main Switch
- New **SRGT2B Type 2 Surge Protection Device** connects directly to the comb busbar and eliminates the need for a dedicated MCB, giving you **one additional useable way**
- **Free** accessories included (a main tails clamp, a rear grommet, a DIN rail blank)



Knockout Arrangement	New Part Number	Old Part Number	Useable Ways	Enclosure Size (Modules)
□	PRO-S06W-R1S	PRO-MX08MS	6	9
	PRO-S08W-R1S	PRO-MX10MS	8	11
	PRO-S10W-R1S	PRO-MX12MS	10	13
	PRO-S14W-R1S	PRO-MX16MS	14	17
	PRO-S19W-R1S	PRO-MX21MS	19	22
○	PRO-R06W-R1S	PRO-R08MS	6	9
	PRO-R08W-R1S	PRO-R10MS	8	11
	PRO-R10W-R1S	PRO-R12MS	10	13
	PRO-R14W-R1S	PRO-R16MS	14	17
	PRO-R19W-R1S	PRO-R21MS	19	22

## ▲ Dual Row RCBO Consumer Units with Type 2 Surge Protection (White)

- Configured with 100A DP Main Switch
- New **SRGT2B Type 2 Surge Protection Device** connects directly to the comb busbar and eliminates the need for a dedicated MCB, giving you **one additional useable way**
- **Free** accessories included (a main tails clamp, a rear grommet, a DIN rail blank)



Knockout Arrangement	New Part Number	Old Part Number	Useable Ways	Enclosure Size (Modules)
○	PRO-R22W-R1S	PRO-RD21MS	22	26
	PRO-R30W-R1S	PRO-RD29MS	30	34
	PRO-R40W-R1S	PRO-RD39MS	40	44

## ▲ RCBO Consumer Units with Type 2 Surge Protection (Matte Black)

- Configured with 100A DP Main Switch
- New **SRGT2B Type 2 Surge Protection Device** connects directly to the comb busbar and eliminates the need for a dedicated MCB, giving you **one additional useable way**
- **Free** accessories included (a main tails clamp, a rear grommet, a DIN rail blank)



Knockout Arrangement	New Part Number	Old Part Number	Useable Ways	Enclosure Size (Modules)
○	PRO-R10B-R1S	PRO-R12MSBK	10	13
	PRO-R19B-R1S	PRO-R21MSBK	19	22

## ▲ Pre-populated RCBO Consumer Units with Type 2 Surge Protection (White)

- Configured with 100A DP Main Switch, 2x 80A 30mA RCCBs, and 6x MCBs, 4x spare ways
- New **SRT2B Type 2 Surge Protection Device** connects directly to the comb busbar and eliminates the need for a dedicated MCB, giving you **one additional useable way**
- **Free** accessories included (a main tails clamp, a rear grommet, a DIN rail blank)



Knockout Arrangement	New Part Number	Old Part Number	Useable Ways	Enclosure Size (Modules)
□	PRO-S10W-P1S	PRO-PR10S	10	13
	PRO-S14W-P1S	PRO-PR14S	14	17

## ▲ Semi-Populated Dual RCCB

- Configured with 100A DP Main Switch, 2x 80A 30mA Class A RCCBs • Includes interconnecting cables



Knockout Arrangement	New Part Number	Old Part Number	Useable Ways	Enclosure Size (Modules)
□	PRO-S07W-D1	PRO-MX12RRMFLEXIA	7	13
	PRO-S11W-D1	PRO-MX16RRMFLEXIA	11	17
	PRO-S16W-D1	PRO-MX21RRMFLEXIA	16	22
○	PRO-R07W-D1	PRO-R12RRMFLEXIA	7	13
	PRO-R11W-D1	PRO-R16RRMFLEXIA	11	17
	PRO-R16W-D1	PRO-R21RRMFLEXIA	16	22

## ▲ Dual Tariff

- Configured with 2x 100A Main Switches and 2 distribution busbars • 2x Neutral bars & 1 x Earth bar
- Compatible with 6kA single pole MCBs and Switched or un-switched neutral RCBOs and AFDD RCBOs



Knockout Arrangement	New Part Number	Old Part Number	Useable Ways	Enclosure Size (Modules)
□	PRO-S13W-T1	PRO-MX17DT	13	17
	PRO-S18W-T1	PRO-MX22DT	18	22
○	PRO-R13W-T1	PRO-R17DT	13	17
	PRO-R18W-T1	PRO-R22DT	18	22

## ▲ RCCB Incomer

- Configured with 30mA RCCB incomer • Arranged with 1 x Neutral & 1 x Earth bar



Knockout Arrangement	New Part Number	Old Part Number	Useable Ways	Enclosure Size (Modules)
□	PRO-S07W-C1	PRO-MX08R	7	9
	PRO-S09W-C1	PRO-MX10R	9	11
	PRO-S11W-C1	PRO-MX12R	11	13
○	PRO-R03W-C1	PRO-R04R	3	5
	PRO-R07W-C1	PRO-R08R	7	9
	PRO-R09W-C1	PRO-R10R	9	11
	PRO-R11W-C1	PRO-R12R	11	13

## ▲ Split Load Consumer Units with Surge Protection

- Configured with 100A DP Main Switch, 80A 30mA Class A RCCBs and new Type 2 SPD • Includes interconnecting cables



Knockout Arrangement	New Part Number	Old Part Number	Useable Ways	High Integrity Ways	Enclosure Size (Modules)
□	PRO-S12W-H1S	New offer	12	9	17
	PRO-S17W-H1S	New offer	17	15	22
○	PRO-R12W-H1S	New offer	12	9	17
	PRO-R17W-H1S	New offer	17	15	22

Scan the QR code to explore our range of compact RCBOs, designed to efficiently populate your consumer unit.



## Accessories

Pro consumer units now come with a **FREE ACCESSORY PACK**, including:

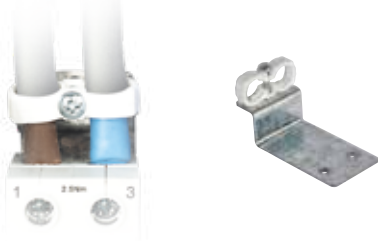
- Mains tails clamp
- Rear entry cable grommet
- DIN rail modular blank

These accessories are also available to purchase separately.

Segmented cable grommets for rear knockouts on all PRO Consumer units	
CUGR-LR	CUGR-SR
100 x 60mm (Pack of 3)	60 x 60mm (Pack of 4)



Mains Tail Clamp
MTC
1 in each pack



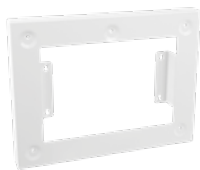
Multi-Function DIN rail blank
MFDRB
1 in each pack



PRO CU Hasp & Staple locking kit
<p>A security hasp and staple for the drop-down cover &amp; lid of a PRO Consumer Unit to prevent unauthorised access to circuit protection devices.</p> <ul style="list-style-type: none"> <li>• Easy to install - no drilling required.</li> <li>• Manufactured from stainless steel.</li> <li>• Supplied with an equipotential bonding cable for connection to the consumer unit earth bar.</li> </ul>
PRO-LA



Surface Patress	
<p>Wall mounting frame that spaces the consumer unit off the wall by 30mm, allowing surface mounted cables to enter the consumer unit from the rear. Enables neater wiring inside the consumer unit Finished in white</p>	
PRO-SP13W	13 Modules
PRO-SP17W	17 Modules
PRO-SP22W	22 Modules



## Surge protection devices

**NEW**

New SPD connects directly to the busbar, eliminating the need for a dedicated MCB, ensuring efficient installation and saving 1 module space.

### ▲ Single Phase SPDs

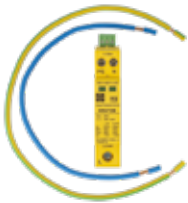
- Fits directly to the comb busbar in PRO consumer units
- No dedicated MCB required
- Suitable for use with maximum back up fuse 100A
- Mechanical flag and volt free changeover signalling contact for end of life indication



Part Number	Type	Voltage Protection Level (Up) L/N 8/20 $\mu$ s	Nominal discharge current (In) 8/20 $\mu$ s	Max continuous operating voltage (Uc)	Config.	Total Modules
SRGT2B	Type 2	1.5kV	20kA (L-N) 20kA (N-PE)	275 VAC	1+1 (Connection Type CT2)	1

### ▲ Surge protection kit

- Kit comprises Type 2 SPD and 6mm<sup>2</sup> connection cables
- Suitable for use in TN-C-S (PME) / TN-S / and TT networks



Part Number		Description				
SRGT2B-KIT		SRGT2B+Cable set for Lewden Consumer Units				
Type	Voltage Protection Level (Up) L/N 8/20 $\mu$ s	Nominal discharge current (In) 8/20 $\mu$ s	Max continuous operating voltage (Uc)	Config.	Total Modules	
Type 2	1.5kV	20kA (L-N) 20kA (N-PE)	275 VAC	1+1 (Connection Type CT2)	1	

Scan to access the CPD course on SPDs from our Lewden Academy



## 125A TP&N Type B Distribution Board with Type 2 SPD

**NEW**

- Space-saving integrated with SPD seamlessly built into the TPN main body, eliminating the need for an extension box or SPD in separate enclosure.
- Time saving, all pre-fitted so no tails kits or knocking out apertures.
- Type 2 device protects against man-made switching surges suitable for TN-C-S / TN-S / TT earthing network systems.
- Design allows for the full TPN board ways to be utilised, SPD MCB are adjacent to the main switch.



Part Number	Description	Outgoing Ways
E-TPN04LW-SPD2	4 way, 125A	4 x TP / 12 x SP
E-TPN08LW-SPD2	8 way, 125A	8 x TP / 24 x SP
E-TPN12LW-SPD2	12 way, 125A	12 x TP / 36 x SP
E-TPN16LW-SPD2	16 way, 125A	16 x TP / 48 x SP

The board is supplied complete with a 125A 4 pole main switch. Compatible with 10kA circuit protection devices. For 6kA devices, mounting accessory kits will be required.

Rated Operational Voltage Ue	IP Rating	Rated Conditional Short Circuit Current ICC	Standards
230V/400V 50Hz	IP2XC	16kA RMS (backed up by a 125A fuse)	BS EN 61439-3

### ▲ TP&N distribution boards - Type B



Part Number	Description	Outgoing Ways
E-TPN04LW	4 way, 125A	4 x TP / 12 x SP
E-TPN08LW	8 way, 125A	8 x TP / 24 x SP
E-TPN12LW	12 way, 125A	12 x TP / 36 x SP
E-TPN16LW	16 way, 125A	16 x TP / 48 x SP

The board is supplied complete with mounting brackets to suit 100/125A main switch and 10kA circuit protection devices. For other devices, mounting accessory kits will be required.

Rated Operational Voltage Ue	IP Rating	Rated Conditional Short Circuit Current ICC	Standards
230V/400V 50Hz	IP2XC	16kA RMS (backed up by a 125A fuse)	BS EN 61439-3

## Sub distribution

### ▲ 100A DP metal fused switch

- Main switch or RCCB incomer options
- Supplied complete with 63A, 80A, and 100A gG fuses IEC60269-2 (BS88-2) Ø22x58mm
- Easily configurable for top or bottom entry of incoming supply cables
- 3 way Earth bar 25mm<sup>2</sup>



	Part Number	Rated Current	Rated Voltage	Fuse Rating	Incomer
<b>NEW</b>	FS	100A	230VAC	Fuse not included	Main Switch 100A DP
	FS6380100	100A	230VAC	63A,80A,100A	Main Switch 100A DP
<b>NEW</b>	FS63	100A	230VAC	63A	Main Switch 100A DP
<b>NEW</b>	FS80	100A	230VAC	80A	Main Switch 100A DP
<b>NEW</b>	FS100	100A	230VAC	100A	Main Switch 100A DP
	FR6380100	100A	230VAC	63A,80A,100A	RCCB 100mA class A (Time Delayed)

Replacement fuses are available for FS6380100

• 63A- Part number: F063A • 80A- Part number: F080A • 100A - Part number: F100A

### ▲ Electricity isolator switch

- Available in a 2 module enclosure complete with a 100A DP Main Switch and a 100A 100mA time-delayed RCCB, or in a 4-module enclosure complete with a 100A 4P Main Switch.
- Ingress rating IP20 IK07
- Designed for use with 16mm<sup>2</sup> & 25mm<sup>2</sup> double insulated meter tails type 6181Y



	Part Number	Enclosure modules	Terminal Type	Main Switch
<b>NEW</b>	SLM2-DS	2	2 screws	100A DP
	SLM2-MS	2	standard 1 screw	100A DP
	SLM4-MS	4	standard 1 screw	100A 4P
<b>NEW</b>	SLM2-100mAS	2	-	RCCB 100mA Class A (Time delayed)

### ▲ Dual Screw Main Switch

- 100A DP main switch AC22A
- Dual 3mm allen screw terminals provide a higher security electrical connection



	Part Number	Enclosure modules	Rating
<b>NEW</b>	GMS1002DS	2	100A DP

### ▲ Distribution Terminal Blocks

Now designed with **3mm Allen screw terminals**, simplifying installations by requiring just one 3mm Allen key for all connections.

- 5 Way Single Pole Distribution Terminal Blocks - 100A <690VAC • Can accept up to 5 conductors with a generous cable capacity from 2.5 to 35mm<sup>2</sup>.
- Dual screw terminations to ensure secure and reliable connections • Ingress Protection IP20; 960°C glow wire tested • Secure cover with wire locking capability • Colour coded for easy identification. • Sold in a box quantity of 5 per color



Part Number	Colours	Dimensions H x W x D (mm)
DT1005BR	Brown (L1)	68 x 50 x 43.5
DT1005BK	Black (L2)	68 x 50 x 43.5
DT1005GY	Grey (L3)	68 x 50 x 43.5
DT1005BL	Blue (N)	68 x 50 x 43.5
DT1005GN	Green (Earth)	68 x 50 x 43.5
DT1005PK	Pink (Functional Earth)	68 x 50 x 43.5

## For more information contact your local Lewden Regional Sales Managers & agents



Lewden Support

### Iain Taggart

+44 (0) 1376336213  
iain@cyrusagencies.co.uk  
Scotland

### Kate Knox

+44 (0) 1376336214  
kk@kateknoxagencies.com  
North

### Core distribution NI

+44 (0) 2890020066  
info@coreelectrical.com  
Northern Ireland

### Mark Wooding

+44 (0) 1376336216  
woody@markwoodingagencies.co.uk  
London South & South East

### Mikesh Mistry

+44 (0) 7442242193  
mikesh.mistry@lewden.co.uk  
Midlands

### Tim Ketterer

+44 (0) 1376336219  
tim@lm-agencies.com  
London North & East Anglia

### Lee Mallett

+44 (0) 1376336220  
lee@lm-agencies.com  
London North & East Anglia

### Chris Smith

+44 (0) 7919922910  
chris.smith@lewden.co.uk  
South West & Wales

### Hazel Barry

+44 (0) 7442238552  
hazel.barry@lewden.co.uk  
Wholesale Partnerships  
Development Manager



Midlands	Northern Ireland	South West & Wales	London South & South East	London North & East Anglia	Scotland	North	
LN	<b>Core Electrical</b> BT	BA	BN	AL	HS	BB	
NG		BH	BR	CB	IV	BD	
LE		BS	CR	CM	AB	BL	
NN		DT	CT	CO	PH	CA	
CV		EX	DA	E	DD	DH	
<b>Mikesh Mistry</b>		B	GL	GU	EN	PA	DL
		DE	GY	KT	HA	FK	DN
		DY	JE	ME	HP	KY	HD
		ST	PL	PO	IG	KA	HG
		TF	SN	RG	IP	G	HU
	WR	SP	RH	LU	EH	HX	
	WS	TA	SE	MK	TD	L	
	WV	TQ	SL	N	KA	LA	
		TR	SM	NR	DG	LS	
		OX	SO	NW	IM	M	
		SW	RM		<b>Kate Knox</b>	NE	
		TN	SG		OL	PR	
		TW	SS		S	SK	
		UB	WD		TS	WA	
		EC	WT		WF	WN	
		WC			YO	FY	
		W			SR	LL	
					CH	CW	



The Electricians' Choice

Tel.: +44 (0) 1376 336 200 | sales@lewden.co.uk | lewden.com



Lewden\_Elec



Lewden - Palazzoli Group



Lewden



@lewdenpalazzoli



@lewdenltd